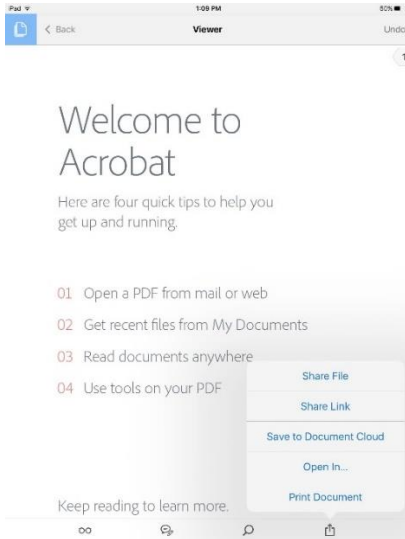


Printing Instructions for iOS Devices

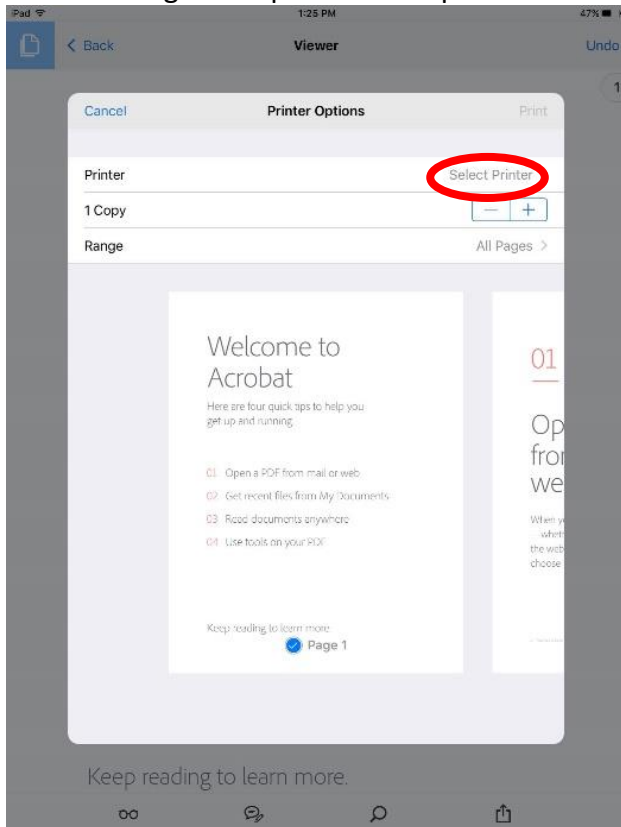
Enable Wi-Fi and connect to the “whales” network.

Open the document that you wish to print.

Tap on the share icon, it looks like a box with an arrow pointing through the top from the middle of the box.



Scroll through the options and tap “Print”.



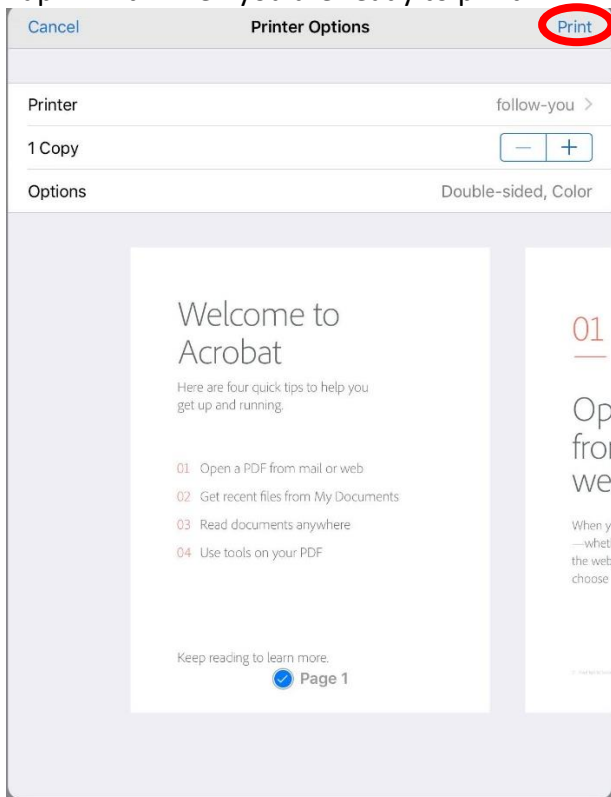
Select “follow-you” as the printer.



Login using your NEOMED username and password.

Select “Options” to change print settings.

Tap “Print” when you are ready to print.



Go to the nearest printer and log in with your NEOMED username & password or swipe your paired badge.

On the printer’s screen select “Release.”

Select the documents you want to print immediately and select “Print.”